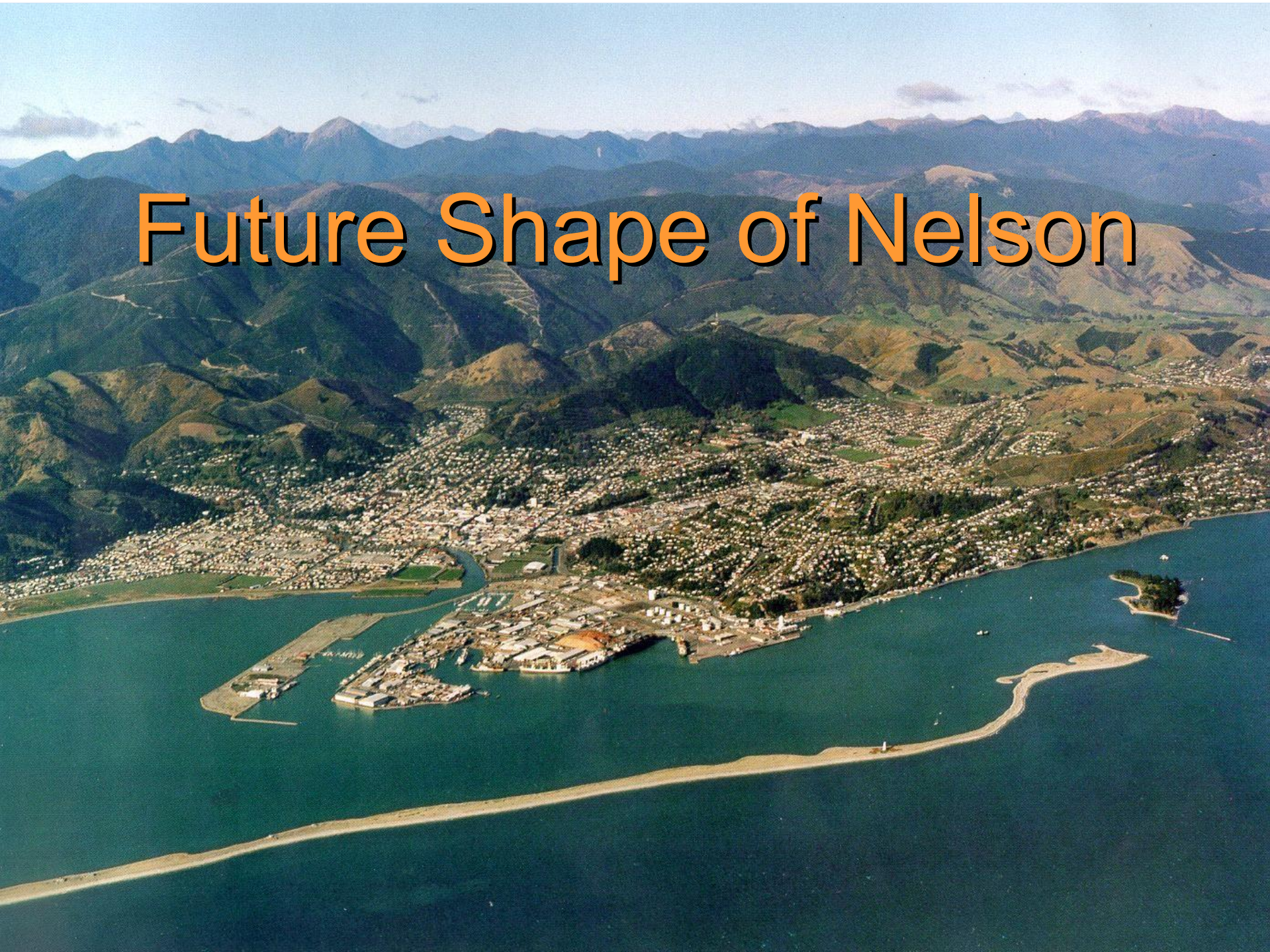


Future Shape of Nelson



Nelson – Richmond Growth

- Projected 7,000-9,000 extra households by 2031
- Average household size decreasing from 2.5 persons to 2.1 by 2031
- Aging population with 30% over 60 by 2031

Settlement Pattern Strategy

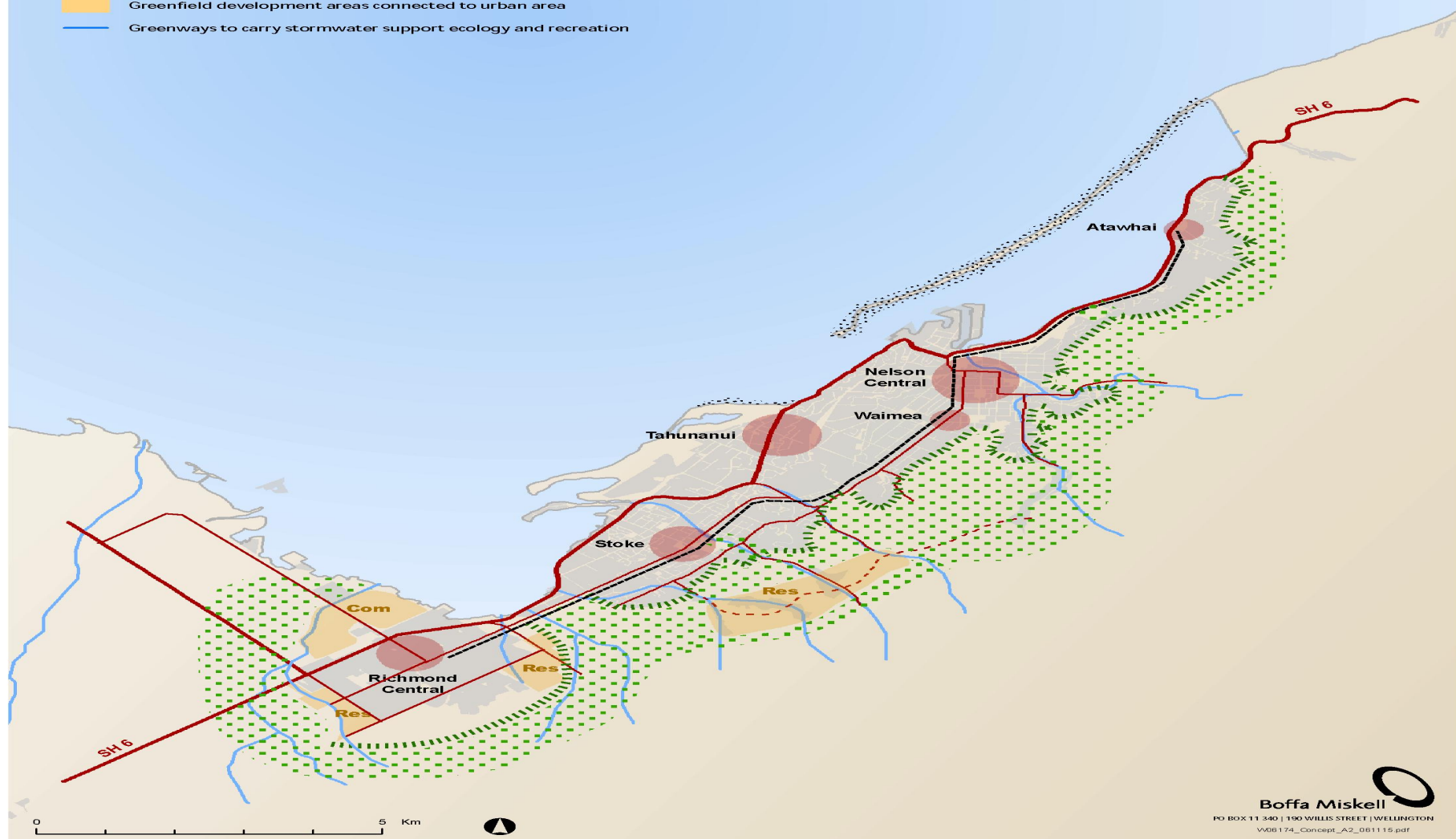
- **Nelson Urban Growth Strategy 2006 (NUGS)**
- **How will we manage growth?**
 - **Control the sprawl**
 - **Higher density urban areas**
 - **Live, work, play, shop in each centre**
 - **Protect natural landscapes**
 - **Enhance natural ecosystems**
 - **NCC and TDC working together**

NELSON / TASMAN FUTURES GROUP

Urban Development Concept to 2031

URBAN DESIGN PRINCIPLES

- Hierarchy of Roads
- Mixed use intensification nodes at centres
- - - - Public transport corridor linking centres
- ■ ■ ■ Urban edge defined by landscape - forms town belt
- □ □ □ Open Landscape defines neighbourhoods / suburban areas
- ■ ■ ■ Greenfield development areas connected to urban area
- Greenways to carry stormwater support ecology and recreation











Upcoming Opportunities

- National initiatives
- Communities for Climate Protection (CCP)
- Renewable energy - solar power
- Corridor Study – Regional Land Transport Strategy
- Regional Policy Statement review

Questions?

